



Disadvantaged Areas in the Anglican Diocese of Sydney

A report for the Ministry in Marginalised Areas Committee (MiMAC)

September 2023

Penny Andersen and John Bellamy
Anglicare Social Policy & Research Unit





Table of Contents

1. Introduction	3
1.1 Purpose of this Report	3
2. Identifying Disadvantaged Areas	4
2.1 The Index of Relative Socio-Economic Disadvantage (IRSD)	4
2.2 <i>Dropping Off the Edge 2021</i> Study	4
3. List of Parishes in Disadvantaged Areas	10
4. Comparison with Previous List of Parishes in Disadvantaged Areas	11
4.1 Parishes No Longer in the Disadvantaged List	11
4.2 Parishes New to the Disadvantaged List	12
5. Conclusion	12

1. Introduction

The Ministry in Marginalised Areas Committee (MiMAC) is a sub-committee of Standing Committee of the Anglican Diocese of Sydney. MiMAC provides support to parishes of the Diocese which minister in areas of socio-economic disadvantage.

The Australian Bureau of Statistics (ABS) produces a suite of Socio-Economic Indexes for Areas (SEIFA)¹, which measure socio-economic disadvantage and advantage in communities, based on the 5-yearly Census data. A report prepared in 2020 for MiMAC identified the 25 most disadvantaged postal areas (postcodes) in the Diocese, based on one of the SEIFA indexes: the 2016 Index of Relative Socio-Economic Disadvantage (IRSD).²

The 2020 report also documented the 25 most disadvantaged postal areas in the Diocese based on analysis from the 2015 *Dropping Off the Edge* (DOTE) study prepared by Jesuit Social Services and Catholic Social Services Australia.³ The DOTE study combined 22 indicators of social disadvantage, resulting in a ranking of postcodes for disadvantage across Australia.

A comparison of the IRSD and DOTE listings revealed strong similarities, with 21 of the 25 most disadvantaged postcodes being common to both lists. Based on the IRSD listing, the 2020 report identified those parishes which intersected with the 25 listed postal areas. In total, some 35 parishes were identified, of which part or all of the parish area was located in one of Sydney's 25 most disadvantaged postal areas.

Since the 2020 report was written, SEIFA data have become available from the 2021 Census, including an updated IRSD. In addition, a new *Dropping Off the Edge* report has been produced,⁴ which identifies disadvantage using a combination of 37 socio-economic, intergenerational disadvantage and environmental indicators.

1.1 Purpose of this Report

The purpose of this report is to update the previous 2020 report, based on new findings obtained from the 2021 *Dropping Off the Edge* report and the 2021 IRSD.

¹ For more information about SEIFA, see <https://www.abs.gov.au/statistics/people/people-and-communities/socio-economic-indexes-areas-seifa-australia/2021>.

² Andersen, P. (2020) *Disadvantaged Postal Areas in the Anglican Diocese of Sydney*, Anglicare Sydney, Social Policy & Research Unit.

³ Vinson, T. and Rawsthorne, M. (2015) *Dropping Off the Edge Report 2015*, Jesuit Social Services, Catholic Social Services Australia.

⁴ Tanton, R., Dare, L., Miranti, R., Vidyattama, Y., Yule, A. and McCabe, M. (2021), *Dropping Off the Edge 2021: Persistent and multilayered disadvantage in Australia*, Jesuit Social Services: Melbourne. Available at https://static1.squarespace.com/static/6170c344c08c146555a5bcbe/t/61958bf805c25c1e068da90f/1637190707712/DOTE_Report+_Final.pdf

Team	Approved	Risk Rating	Version No	Page
Anglicare Sydney SPRU	September 2023		1	3 of 13

2. Identifying Disadvantaged Areas

The Australian Statistical Geography Standard (ASGS) Edition 3 of the ABS divides Australia into a series of areas ranging from the smaller Statistical Areas Level 1 (SA1s) to the larger Level 4 areas (SA4s). Statistical Areas Level 2 (SA2s) are “built to represent communities that interact together socially and economically”, with populations ranging from approximately 3,000 to 25,000.⁵ The *Dropping Off the Edge 2021* report now uses SA2 areas rather than postcodes, and SEIFA data is available in this geography as well. Therefore, SA2s rather than postcodes have been adopted in the current report.

Some 387 NSW SA2s lie within the Sydney Diocese. Note that areas of the Sydney Diocese outside NSW, (i.e. Norfolk Island and the Jervis Bay Territory), were excluded from this analysis.

2.1 The Index of Relative Socio-Economic Disadvantage (IRSD)

The Index of Relative Socio-Economic Disadvantage (IRSD) is constructed using 15 variables derived from 2021 Census data, including areas such as income, education, employment, occupation and housing.⁶ SA2s were ordered from the lowest to highest IRSD score, with lower scores indicating greater levels of disadvantage. Table 1 shows the 40 most disadvantaged SA2s in the Sydney Diocese, including their ranking within NSW according to the IRSD from 2021.

2.2 Dropping Off the Edge 2021 Study

The *Dropping Off the Edge 2021* report (DOTE) identified 37 indicators from a variety of sources to construct an index of disadvantage.⁷ The indicators were grouped into seven domains: social distress, health, community safety, economic, education, environment, and lifetime disadvantage. DOTE found that, within NSW, the most disadvantaged SA2s were in regional and rural areas, with relatively few of the most disadvantaged SA2s being located within Greater Sydney.

DOTE does not provide a ranking of SA2s, but rather lists the most disadvantaged SA2s in bands of ten, Band 1 being the most disadvantaged. Only 7 of the top 40 disadvantaged SA2s in NSW were located within the Sydney Diocese. These are indicated in Table 1 as ‘Band 1’ if in the top 10, ‘Band 2’ if in the next 10, and so on. Some 32 SA2s within the Sydney Diocese were in the most disadvantaged quintile in NSW according to DOTE; those outside the top 40 are indicated in Table 1 as being in ‘Band 5 or above’. In examining multi-layered disadvantage, DOTE identified 22 SA2s which had 8 or more indicators in the top 5% of disadvantage in NSW; 12 of these were located in the Sydney Diocese.⁸

Table 1 shows the top 40 disadvantaged SA2s in the Sydney Diocese according to the IRSD. The table also indicates whether these SA2s were also in Quintile 1 of the DOTE disadvantaged SA2s in NSW and, if so, which band they were in, with Band 1 being the most disadvantaged. Three

⁵ Australian Bureau of Statistics (2021) Australian Statistical Geography Standard (ASGS) Edition 3. <https://www.abs.gov.au/statistics/standards/australian-statistical-geography-standard-asgs-edition-3/jul2021-jun2026>

⁶ Australian Bureau of Statistics (2021) Socio-Economic Indexes for Areas (SEIFA), Australia. <https://www.abs.gov.au/statistics/people/people-and-communities/socio-economic-indexes-areas-seifa-australia/2021>. For details of the variables used, see the SEIFA Technical Paper <https://www.abs.gov.au/statistics/detailed-methodology-information/concepts-sources-methods/socio-economic-indexes-areas-seifa-technical-paper/2021>

⁷ Tanton, R., Dare, L., Miranti, R., Vidyattama, Y., Yule, A. and McCabe, M. (2021), *Dropping Off the Edge 2021: Persistent and multilayered disadvantage in Australia*, Jesuit Social Services: Melbourne, pp 64-66 and the *DOTE2021 NSW State Ranking data*, available at <https://www.dote.org.au/new-south-wales>.

⁸ These SA2s had 8 or more indicators in the top 5% of disadvantage in NSW: Ashcroft – Busby – Miller, Fairfield, Cabramatta – Lansvale, Lurnea – Cartwright, Bidwill – Hebersham – Emerton, Fairfield – West, Fairfield – East, Guildford – South Granville, Warwick Farm, Lethbridge Park – Tregear, Port Kembla – Warrawong and Windang – Primbee.

Team	Approved	Risk Rating	Version No	Page
Anglicare Sydney SPRU	September 2023		1	4 of 13

additional SA2s at the bottom of the table were outside the IRSD top 40 but were in the top 40 disadvantaged SA2s in NSW according to DOTE. Table 1 lists the parishes which intersect with each SA2.

Table 1: The 40 Most Disadvantaged SA2s in the Anglican Diocese of Sydney According to the Index of Relative Socio-Economic Disadvantage 2021

Rank in Diocese	SA2 Name	Population 2021	Area (km ²)	SEIFA	Dropping Off the Edge 2021	Intersecting Parishes
				IRSD Rank in NSW	Band in most disadvantaged quintile in NSW	
1	Ashcroft - Busby - Miller	17,962	5.5	1	Band 5 or above*	Sadleir
2	Fairfield	18,248	4.2	2	Band 5 or above	Fairfield with Bossley Park, St John's Park
3	Cabramatta - Lansvale	24,101	7.6	3	Band 5 or above	Cabramatta
4	Lurnea - Cartwright	12,670	3.5	4	Band 5 or above	Liverpool South, Sadleir
5	Canley Vale - Canley Heights	22,261	5.4	5	Band 5 or above	St John's Park, Cabramatta, Fairfield with Bossley Park
6	Bidwill - Hebersham - Emerton	18,536	6.1	6	Band 1	Mt Druitt
7	Fairfield - West	21,249	4.7	7	Band 5 or above	Fairfield with Bossley Park, St John's Park
8	Fairfield - East	15,742	5.7	8	Band 5 or above	Chester Hill with Sefton, Guildford
9	Liverpool - West	13,737	4.1	9	Band 5 or above	Liverpool, Liverpool South
10	Auburn - North	10,592	2.1	10	-	Auburn - St Philip's
11	Guildford - South Granville	22,386	6.8	11	Band 5 or above	Guildford, Merrylands
12	Warwick Farm	5,937	4.7	12	Band 5 or above	Liverpool
13	Auburn - Central	19,487	3.7	13	-	Auburn - St Thomas', Auburn - St Philip's
14	Lakemba	17,092	2.2	14	Band 5 or above	Lakemba, Belmore with McCallums Hill and Clemton Park
15	Cabramatta West - Mount Pritchard	18,249	5.3	16	Band 5 or above	St John's Park, Liverpool, Cabramatta, Sadleir
16	Smithfield - Wetherill Park	19,510	6.6	17	Band 5 or above	St John's Park, Fairfield with Bossley Park
17	Lethbridge Park - Tregear	21,551	11.3	18	Band 2	Mt Druitt
18	Bonnyrigg Heights - Bonnyrigg	17,154	5.2	19	Band 5 or above	Hoxton Park, St John's Park, Sadleir
19	Bankstown - South	18,434	4.4	20	Band 5 or above	Bankstown, Padstow, Yagoona
20	Campsie - South	9,059	1.1	21	-	Campsie

21	Wiley Park	10,135	1.4	22	Band 5 or above	Riverwood - Punchbowl, Greenacre, Lakemba
22	Punchbowl	21,544	5.2	23	Band 5 or above	Riverwood - Punchbowl, Greenacre, Bankstown
23	Liverpool - East	17,536	2.3	24	Band 5 or above	Liverpool
24	Greenfield Park - Prairiewood	8,855	3.6	25	Band 5 or above	St John's Park
25	Port Kembla - Warrawong	9,740	7.0	26	Band 1	Port Kembla
26	Auburn - South	8,860	2.4	27	-	Auburn - St Thomas', Berala
27	Bankstown - North	16,981	2.7	28	-	Bankstown, Yagoona, Greenacre
28	Chester Hill - Sefton	20,842	7.3	29	-	Chester Hill with Sefton, Yagoona
29	Riverwood	11,606	2.7	30	-	Riverwood - Punchbowl
30	Mount Druitt - Whalan	22,918	8.7	32	Band 3	Mt Druitt, Minchinbury, Rooty Hill
31	Macquarie Fields	14,198	9.0	33	-	Ingleburn
32	Granville - Clyde	23,250	5.6	34	-	Granville, Merrylands
33	Regents Park	5,138	2.0	35	-	Regents Park, Yagoona
34	St Johns Park - Wakeley	11,197	3.6	37	Band 5 or above	St John's Park
35	Berala	8,610	2.1	38	-	Berala, Lidcombe, Yagoona
36	Guildford West - Merrylands West	22,929	5.5	39	-	Merrylands, Greystanes - Merrylands West, Fairfield with Bossley Park
37	Yagoona - Birrong	22,484	5.6	40	-	Yagoona, Bankstown, Georges Hall**
38	Campsie - North	11,905	1.6	45	-	Campsie
39	Green Valley	12,919	3.2	46	-	Hoxton Park, Sadleir
40	Merrylands - Holroyd	23,806	5.0	47	-	Merrylands, Greystanes - Merrylands West, Parramatta**
	Berkeley - Lake Heights - Cringila	14,200	12.5	48	Band 3	Port Kembla, Dapto
	Warilla	20,397	9.5	58	Band 2	Shellharbour City Centre, Shellharbour, Oak Flats**
	Windang - Primbee	4,239	5.6	115	Band 4	Port Kembla

SA2 population and area data were sourced from the 2021 Census, counting persons, place of usual residence⁹.

* Band 1 was in the top 10 disadvantaged SA2s in NSW, Band 2 was in the next 10, and so on according to DOTE.

** Only a small proportion of these parishes overlap with a disadvantaged SA2.

⁹ Australian Bureau of Statistics (2021) Socio-Economic Indexes for Areas (SEIFA), Australia. <https://www.abs.gov.au/statistics/people/people-and-communities/socio-economic-indexes-areas-seifa-australia/2021#data-downloads>.

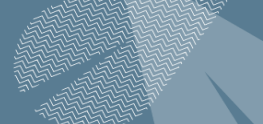


Table 1 shows that 22 of the top 25 most disadvantaged SA2s according to the IRSD are also in the most disadvantaged quintile of NSW SA2s according to DOTE. However, there are areas which DOTE finds to be very disadvantaged which do not feature highly in the IRSD list, such as the Port Kembla area south of Wollongong. Conversely, there are areas of disadvantage in the IRSD listing which do not feature in DOTE's top quintile, for example, Auburn. These differences can be seen in the map shown in Figure 1, where the light pink SA2s are in the top 40 disadvantaged SA2s in NSW according to DOTE, the yellow SA2s are in the top 40 disadvantaged SA2s in the Sydney Diocese according to the IRSD, and the orange and red SA2s are disadvantaged according to both indexes, with the red SA2s also being in the top 40 in NSW according to DOTE.

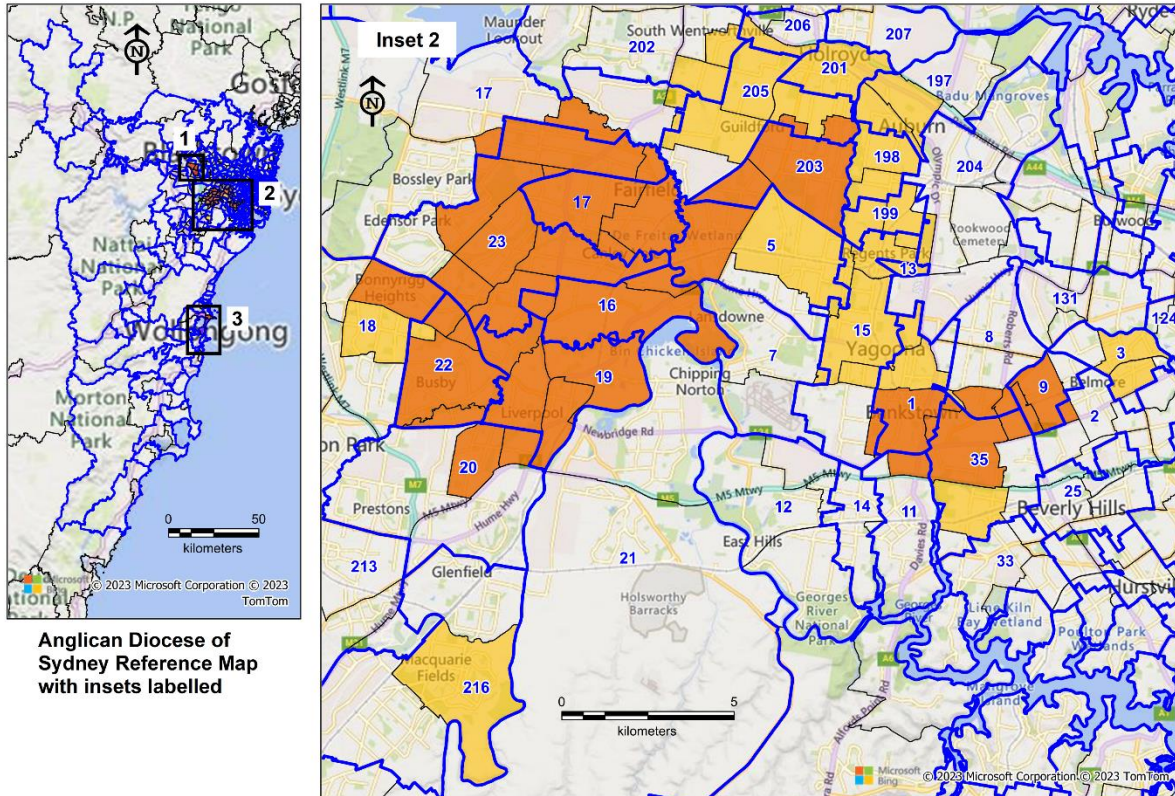
Figure 1 also shows the approximate parish boundaries relative to SA2 boundaries. Those parishes which overlap with disadvantaged areas can be seen on the map. Table 2 shows numbering to identify the parishes depicted in Figure 1. Only those parishes which intersect or are adjacent to disadvantaged areas are labelled.

It can be seen from Figure 1 that disadvantaged areas are concentrated in the Sydney Diocese within South-Western Sydney, Western Sydney and the Port Kembla area south of Wollongong. This is consistent with the previous 2020 report on disadvantage in the Diocese¹⁰, and reflects the entrenched nature of disadvantage and intergenerational poverty in certain parts of Australia.

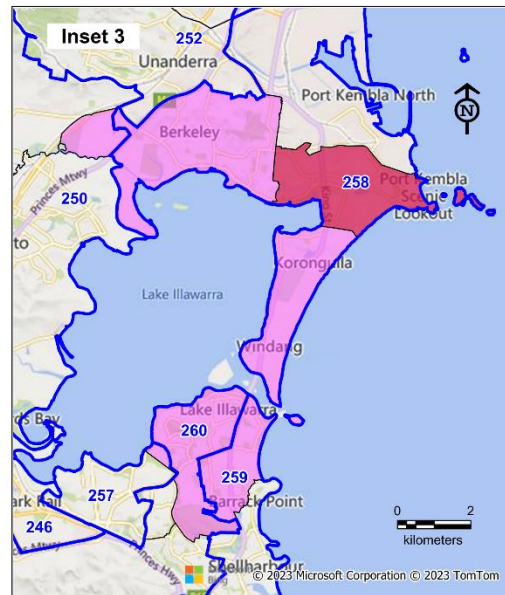
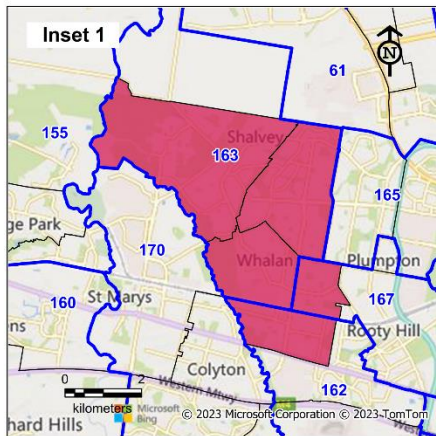
¹⁰ Andersen, P. (2020) *Disadvantaged Postal Areas in the Anglican Diocese of Sydney*, Anglicare Sydney, Social Policy & Research Unit.

Figure 1: Map Showing Disadvantaged SA2s in the Anglican Diocese of Sydney According to Dropping Off the Edge 2021 and the IRSD 2021, with Parish Boundaries

Map of Disadvantaged SA2s in the Parishes of the Anglican Diocese of Sydney



Anglican Diocese of Sydney Reference Map with insets labelled



- Parish of the Anglican Diocese of Sydney
- For Parish number list, see separate key.
- Top 40 disadvantaged SA2 in NSW from Dropping Off the Edge 2021 (DOTE)
- Top 40 disadvantaged SA2 in the Sydney Diocese from the Index of Relative Socio-Economic Disadvantage 2021 (IRSD)
- SA2 in both the top 40 disadvantaged SA2s in the Sydney Diocese of the IRSD and Quintile 1 of disadvantaged SA2s in NSW of DOTE (but not in the top 40)
- SA2 in both the top 40 disadvantaged SA2s in NSW of DOTE and the top 40 disadvantaged SA2s in the Sydney Diocese of the IRSD
- Other SA2 in NSW

Map prepared by Anglicare Sydney, Social Policy & Research Unit, September 2023.

Approximate parish boundaries were derived from a custom aggregation of Statistical Areas Level 1 (Australian Bureau of Statistics, 2021).

Data sources: Tanton et al (2021) "Dropping Off the Edge 2021: Persistent and multilayered disadvantage in Australia", Jesuit Social Services, Melbourne. Index of Relative Socio-Economic Disadvantage by Statistical Area Level 2 (SA2) (Australian Bureau of Statistics, 2021).

Table 2: Parish Number List to Accompany Figure 1

Number	Parish	Mission Area	Diocesan Region
1	Bankstown	Bankstown	South Western
2	Belmore with McCallums Hill & Clemton Park	St George	South Western
3	Campsie	St George	South Western
5	Chester Hill with Sefton	Bankstown	South Western
7	Georges Hall	Bankstown	South Western
8	Greenacre	Bankstown	South Western
9	Lakemba	Bankstown	South Western
11	Padstow	Bankstown	South Western
12	Panania	Bankstown	South Western
13	Regents Park	Bankstown	South Western
14	Revesby	Bankstown	South Western
15	Yagoona	Bankstown	South Western
16	Cabramatta	Liverpool	South Western
17	Fairfield with Bossley Park	Liverpool	South Western
18	Hoxton Park	Liverpool	South Western
19	Liverpool	Liverpool	South Western
20	Liverpool South	Liverpool	South Western
21	Moorebank	Liverpool	South Western
22	Sadleir	Liverpool	South Western
23	St John's Park	Liverpool	South Western
25	Beverly Hills with Kingsgrove	St George	South Western
33	Peakhurst / Mortdale	St George West	South Western
35	Riverwood - Punchbowl	Bankstown	South Western
61	Marsden Park	Hills	Western Sydney
124	Ashbury	Inner West	South Sydney
131	Enfield and Strathfield	Inner West	South Sydney
155	Cambridge Park	Penrith	Western Sydney
160	Kingswood	Penrith	Western Sydney
162	Minchinbury	Penrith	Western Sydney
163	Mt Druitt	Blacktown	Western Sydney
165	Oakhurst	Blacktown	Western Sydney
167	Rooty Hill	Blacktown	Western Sydney
170	St Marys and St Clair	Penrith	Western Sydney
197	Auburn - St Philip's	Parramatta	Western Sydney
198	Auburn - St Thomas'	Parramatta	Western Sydney
199	Berala	Parramatta	Western Sydney
201	Granville	Parramatta	Western Sydney
202	Greystanes - Merrylands West	Parramatta	Western Sydney
203	Guildford	Parramatta	Western Sydney
204	Lidcombe	Parramatta	Western Sydney
205	Merrylands	Parramatta	Western Sydney
206	Parramatta	Parramatta	Western Sydney
207	Parramatta North with Harris Park	Parramatta	Western Sydney
213	Denham Court	Macarthur	South Western
216	Ingleburn	Macarthur	South Western
250	Dapto	Wollongong South	Wollongong
252	Figtree	Wollongong	Wollongong
257	Oak Flats	Wollongong South	Wollongong
258	Port Kembla	Wollongong	Wollongong
259	Shellharbour	Wollongong South	Wollongong
260	Shellharbour City Centre	Wollongong South	Wollongong

3. List of Parishes in Disadvantaged Areas

Table 3 shows the list of parishes in the Anglican Diocese of Sydney which overlap with one or more SA2s either in the top 40 disadvantaged SA2s in the Diocese according to IRSD and/or the top 40 disadvantaged SA2s in NSW according to DOTE. The parishes have been arranged into broad geographical areas: Inner South Western Sydney, South Western Sydney, the Parramatta area of Sydney, Western Sydney, and the Illawarra (Wollongong region). Within each sub-region the parishes are listed in approximate order from most to least overlap with disadvantaged SA2(s) (see Fig. 1).

Table 3 lists 36 disadvantaged parishes in total, or 31 if the parishes with only a small proportion of overlap with a disadvantaged SA2 (marked with *) are excluded.

Table 3: Parishes in Disadvantaged Areas in the Anglican Diocese of Sydney According to Dropping Off the Edge 2021 and IRSD 2021

Region	Parish	SA2(s) intersecting with Parish	
		Disadvantaged SA2s in DOTE Quintile 1	Ranking(s) of most disadvantaged SA2s in Sydney Diocese based on IRSD 2021
South Western Sydney	Sadleir	Yes	1, 4, 15, 18, 39
	St John's Park	Yes	2, 5, 7, 15, 16, 18, 24, 34
	Fairfield with Bossley Park	Yes	2, 5, 7, 16, 36
	Cabramatta	Yes	3, 5, 15
	Liverpool	Yes	9, 12, 15, 23
	Chester Hill with Sefton	Yes	8, 28
	Liverpool South	Yes	4, 9
	Hoxton Park	Yes	18, 39
	Ingleburn	-	31
Parramatta area	Guildford	Yes	8, 11
	Merrylands	Yes	11, 32, 36, 40
	Auburn - St Thomas'	-	13, 26
	Granville	-	32
	Berala	-	26, 35
	Auburn - St Philip's	-	10, 13
	Greystanes - Merrylands West	-	36, 40
	Parramatta*	-	40
	Lidcombe*	-	35

Western Sydney	Mt Druitt	Yes - Band 1, Band 2, Band 3	6, 17, 30
	Minchinbury	Yes - Band 3	30
	Rooty Hill	Yes - Band 3	30
Illawarra	Port Kembla	Yes - Band 1, Band 3, Band 4	25
	Shellharbour City Centre	Yes - Band 2	-
	Shellharbour	Yes - Band 2	-
	Dapto*	Yes - Band 3	-
	Oak Flats*	Yes - Band 2	-
Inner South Western Sydney	Lakemba	Yes	14, 21
	Bankstown	Yes	19, 22, 27, 37
	Riverwood - Punchbowl	Yes	19, 21, 22, 29
	Greenacre	Yes	21, 22, 27
	Yagoona	Yes	19, 27, 28, 33, 35, 37
	Belmore with McCallums Hill and Clemton Park	Yes	14
	Regents Park	-	33
	Campsie	-	20, 38
	Padstow	Yes	19
	Georges Hall*	-	37

* For these parishes, only a small proportion of their area overlaps with a disadvantaged SA2.

4. Comparison with Previous List of Parishes in Disadvantaged Areas

4.1 Parishes No Longer in the Disadvantaged List

The following parishes appeared in the previous list of disadvantaged areas in the 2020 report but do not appear in the current listing (Table 3):

- **Eagle Vale:** POA 2559 (Claymore) was the most disadvantaged postcode in the Sydney Diocese in the 2020 report but is now part of a larger SA2 for the purposes of the current report. Furthermore, the NSW Government is redeveloping the social housing estate in Claymore, with many residents having been relocated to other areas.¹¹ This has contributed to the SA2 Claymore - Eagle Vale - Raby dropping to 112th in the IRSD NSW ranking in 2021. It is in Quintile 2 of NSW SA2s in DOTE 2021.

¹¹ Metherell, L. (2021) *Public Housing in Claymore is being redeveloped, displacing some and giving others hope*. ABC News, The World Today. <https://www.abc.net.au/news/2021-06-16/claymore-affordable-housing-australia-talks/100215862>

- **Nowra:** POA 2541 was listed in the 2020 report. It overlaps with the parishes of Nowra and Bomaderry. The SA2 of Nowra in the southern half of this POA is in Quintile 1 of the DOTE SA2s in NSW, but it is ranked 78th in the IRSD disadvantaged SA2s in NSW and so is outside the top 40 in the Sydney Diocese.
- **Bomaderry:** The SA2 of North Nowra – Bomaderry in the northern half of POA 2541 is in Quintile 2 of both the DOTE and IRSD in NSW.
- **Lithgow:** POA 2847 was in the 2020 disadvantaged list. The SA2 of Lithgow is in Quintile 1 of DOTE in NSW but is ranked 69th in NSW according to the IRSD and so is outside the top 40 in the Diocese.
- **Parramatta North with Harris Park:** POA 2142 was in the 2020 report list and intersected with 5 parishes. The change to SA2 geography shows that disadvantage is concentrated in the southern part of this area, thereby excluding Parramatta North with Harris Park.

4.2 Parishes New to the Disadvantaged List

The following parishes were not listed in the 2020 report, but now appear in Table 3:

- **Liverpool:** The parish of Liverpool is wholly comprised of 4 SA2s, all of which are in both DOTE's Quintile 1 of NSW SA2s and in the top 40 disadvantaged SA2s of the Sydney Diocese according to the IRSD.
- **Liverpool South:** A portion of Liverpool South parish overlaps with two SA2s which are disadvantaged according to both DOTE and the IRSD 2021.
- **Campsie:** More than half of Campsie's parish area overlaps with two SA2s which are in the top 40 IRSD disadvantaged SA2s of the Diocese.
- **Regents Park:** This small parish lies within a top 40 disadvantaged SA2 of the Diocese according to the IRSD.
- **Padstow:** A small portion of Padstow parish overlaps with the Bankstown – South SA2 which is in both Quintile 1 of DOTE NSW SA2s and the top 40 disadvantaged Diocesan SA2s of the IRSD, although the area of overlap is an industrial/commercial area.
- **Dapto:** A small portion of Dapto parish overlaps with the Berkeley – Lake Heights – Cringila SA2 which is in Quintile 1 of DOTE NSW SA2s, although the area of overlap is mostly non-residential.

5. Conclusion

By comparing areas of most disadvantage using the *Dropping Off the Edge 2021* report and the SEIFA measures of disadvantage produced by the Australian Bureau of Statistics, this report has shown that the areas of greatest social disadvantage within the Diocese remain largely unchanged from the previous analysis based on 2015 and 2016 data. The exception to this general conclusion is the area around Liverpool; the move away from using the much larger POA 2170 has highlighted the presence of high levels of disadvantage in the west and north of that POA.

This report demonstrates that analysis of disadvantage using Statistical Areas Level 2 is as good if not better than the previous analysis using Postal Areas/postcodes. The preference for SA2s arises from the fact that most are of smaller size than a postal area, allowing for a more fine-grained identification of the location of disadvantage in the Diocese. There is also less variation in the population levels of SA2s compared with postal areas, leading to greater consistency in the application of this geographic filter across the Diocese.

Team	Approved	Risk Rating	Version No	Page
Anglicare Sydney SPRU	September 2023		1	12 of 13



Further analysis at parish level is possible using the DOTE 2021 report. The State Ranking Data from DOTE contains quintile information for 34 indicators for each of the NSW SA2s in the index.¹² This could be used to identify the nature of disadvantage in particular areas, and for informing the planning of ministry within MiMAC parishes.

It is also possible to obtain even more fine-grained analysis of disadvantage according to the IRSD by using data by Statistical Areas Level 1 (SA1). Mapping of IRSD by SA1 is recommended where it is necessary to identify smaller pockets of disadvantage within particular parishes, such as may be required to inform a parish-based strategy for addressing disadvantage. This mapping can be carried out by Anglicare’s SPRU on request.

It is recommended that consideration now be given to updating the list of parishes that come within MiMAC’s purview, according to the revised listing contained in the current report. It is further recommended that the list of disadvantaged parishes continue to be updated in the future, as new versions of the *Dropping Off the Edge* report and SEIFA data become available.

¹² Tanton, R., Dare, L., Miranti, R., Vidyattama, Y., Yule, A. and McCabe, M. (2021), *Dropping Off the Edge 2021 NSW State Ranking Data*, available at <https://www.dote.org.au/new-south-wales>.